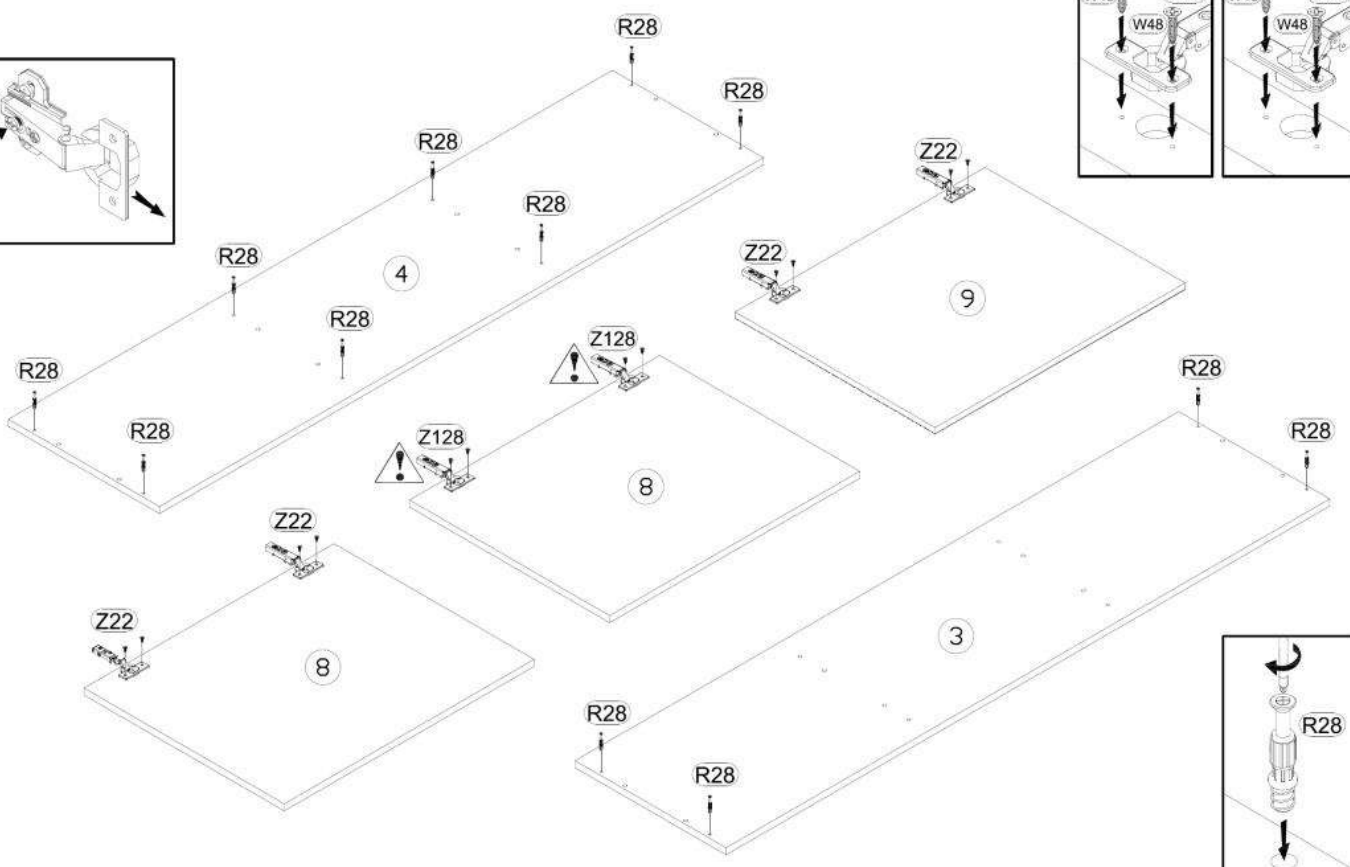
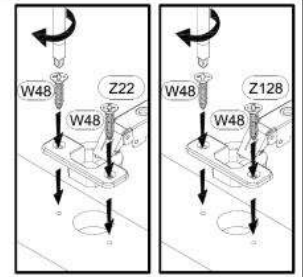
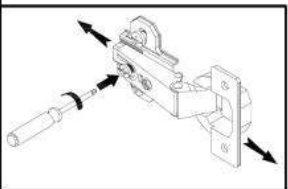
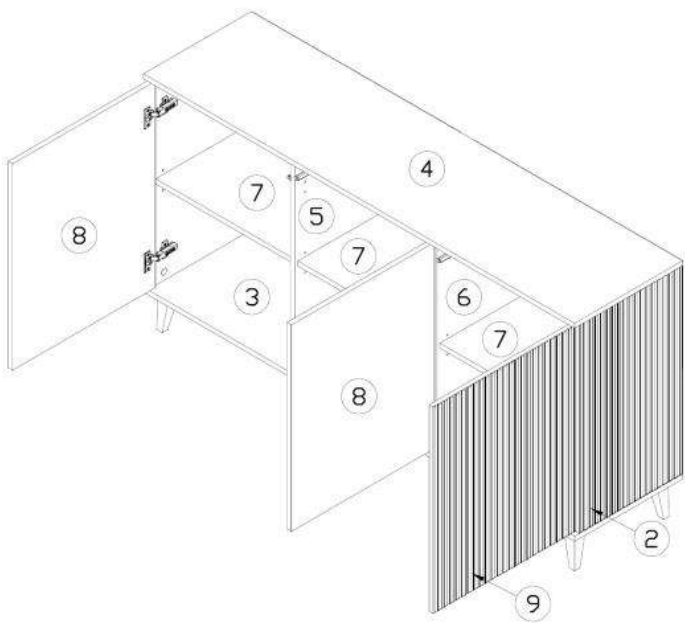


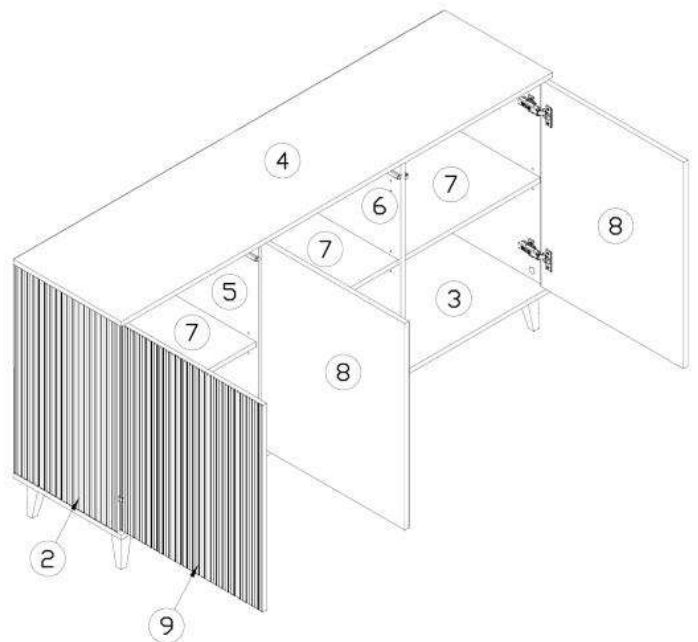
1



NOWOŚĆ

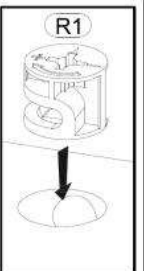
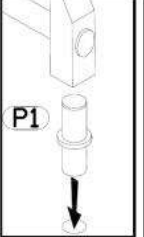
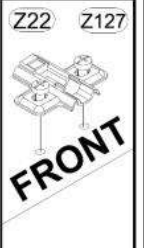
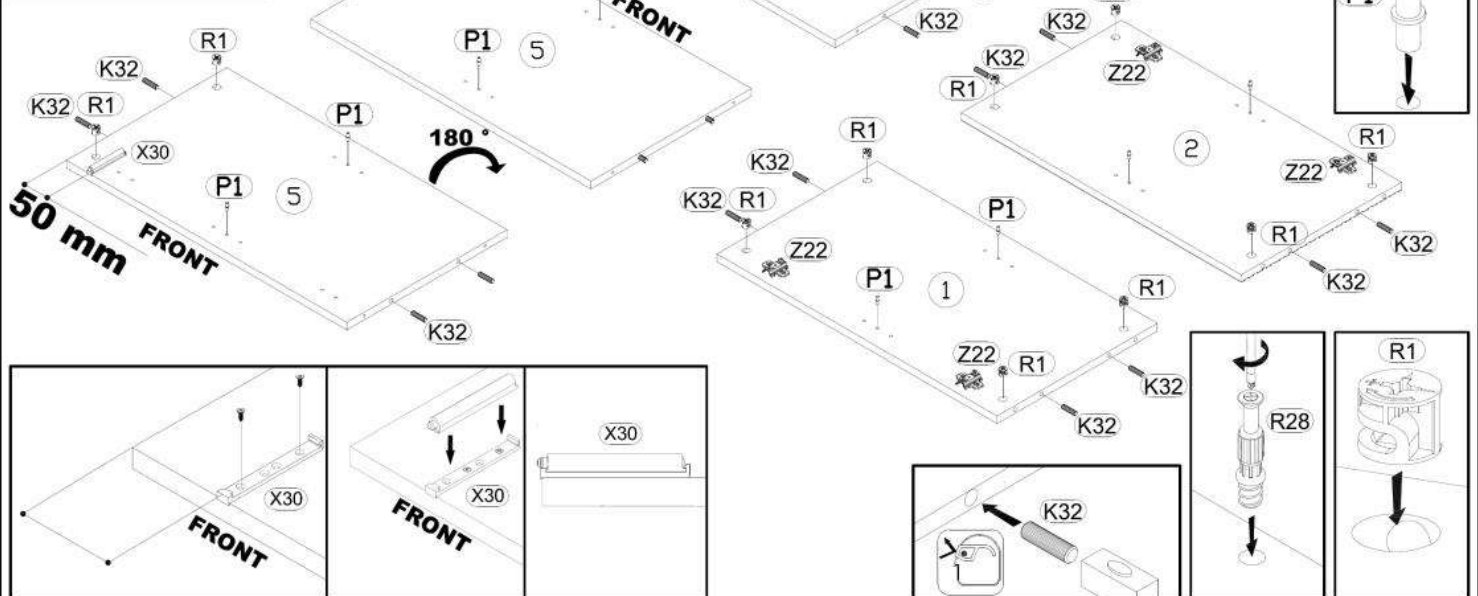
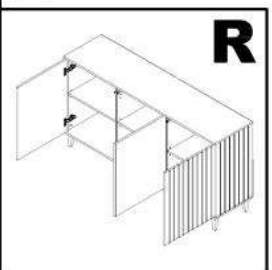


"RIGHT" 2-5



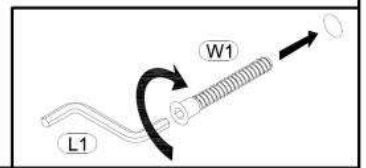
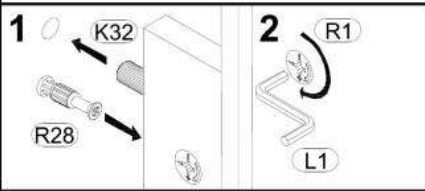
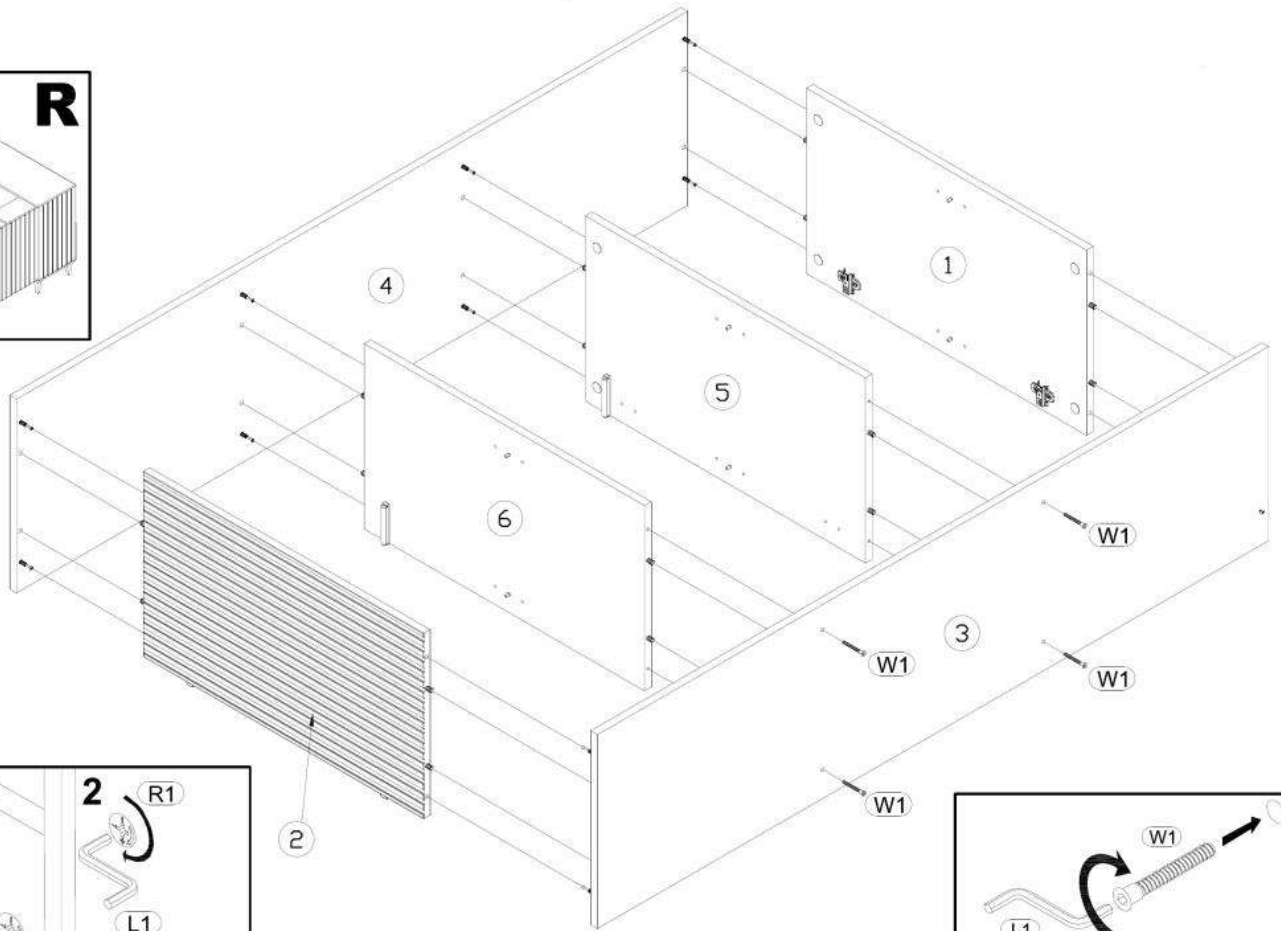
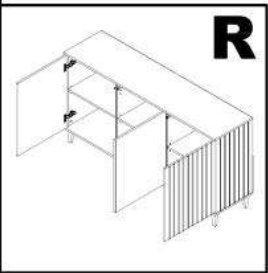
"LEFT" 6-9

2

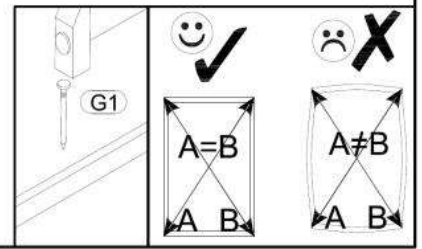
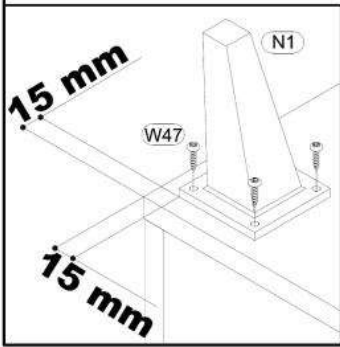
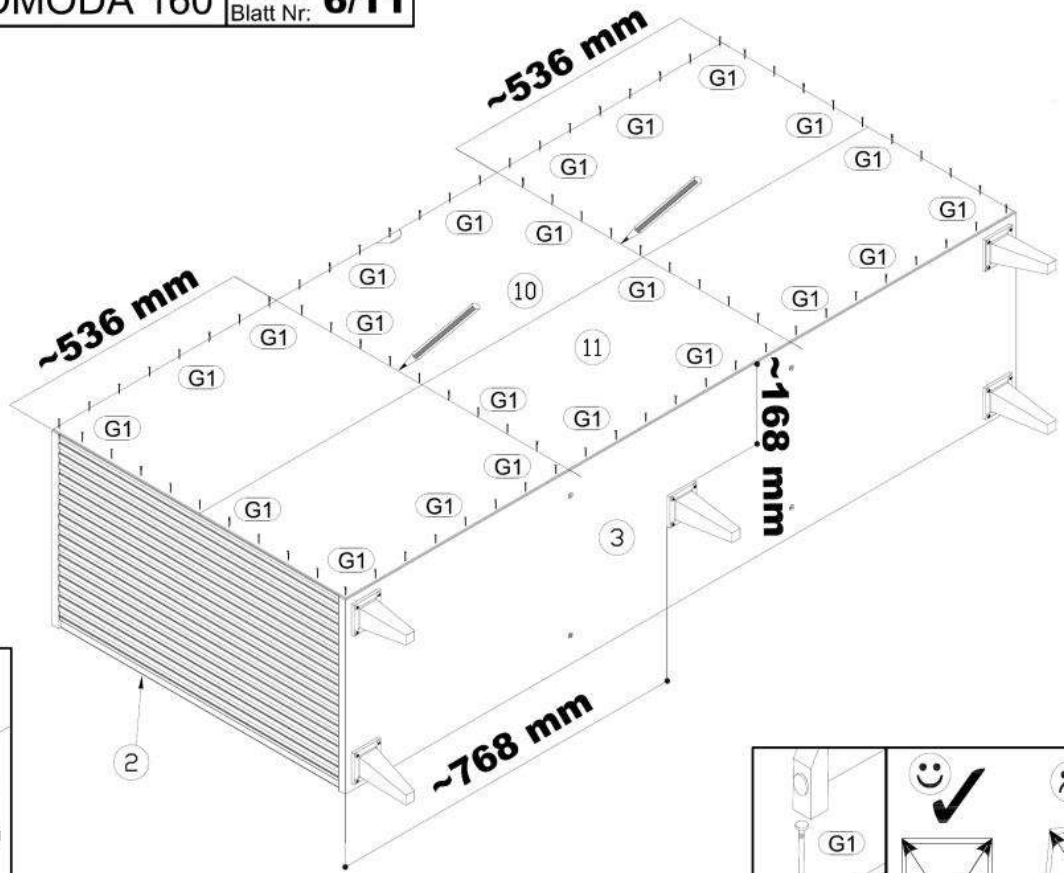
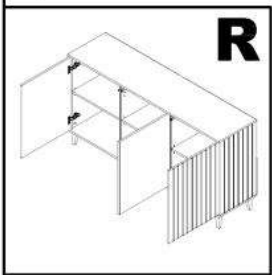


NOWOŚĆ

3

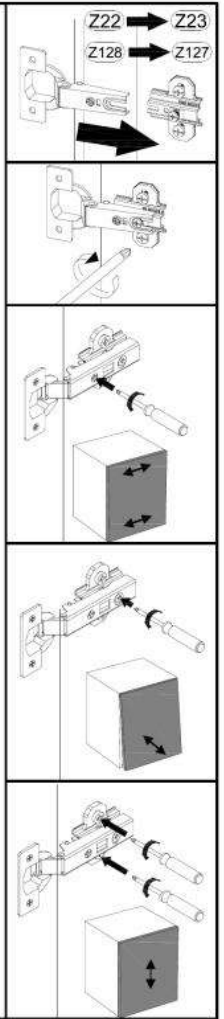
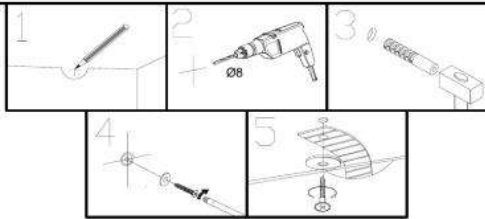
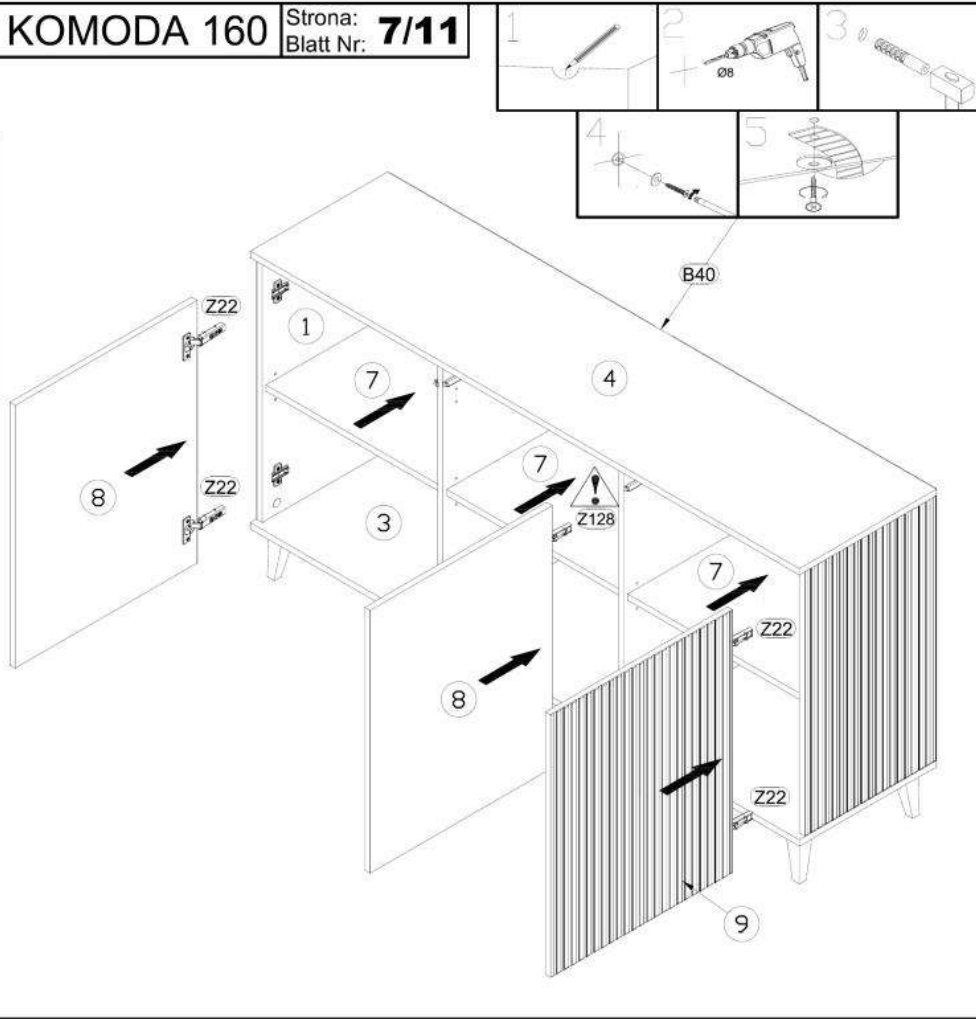
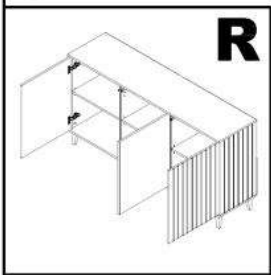


4



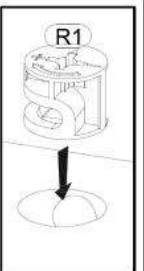
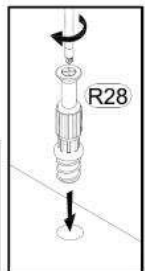
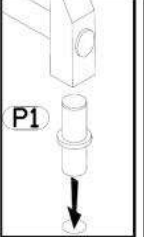
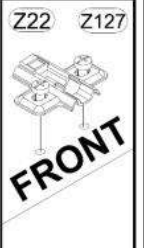
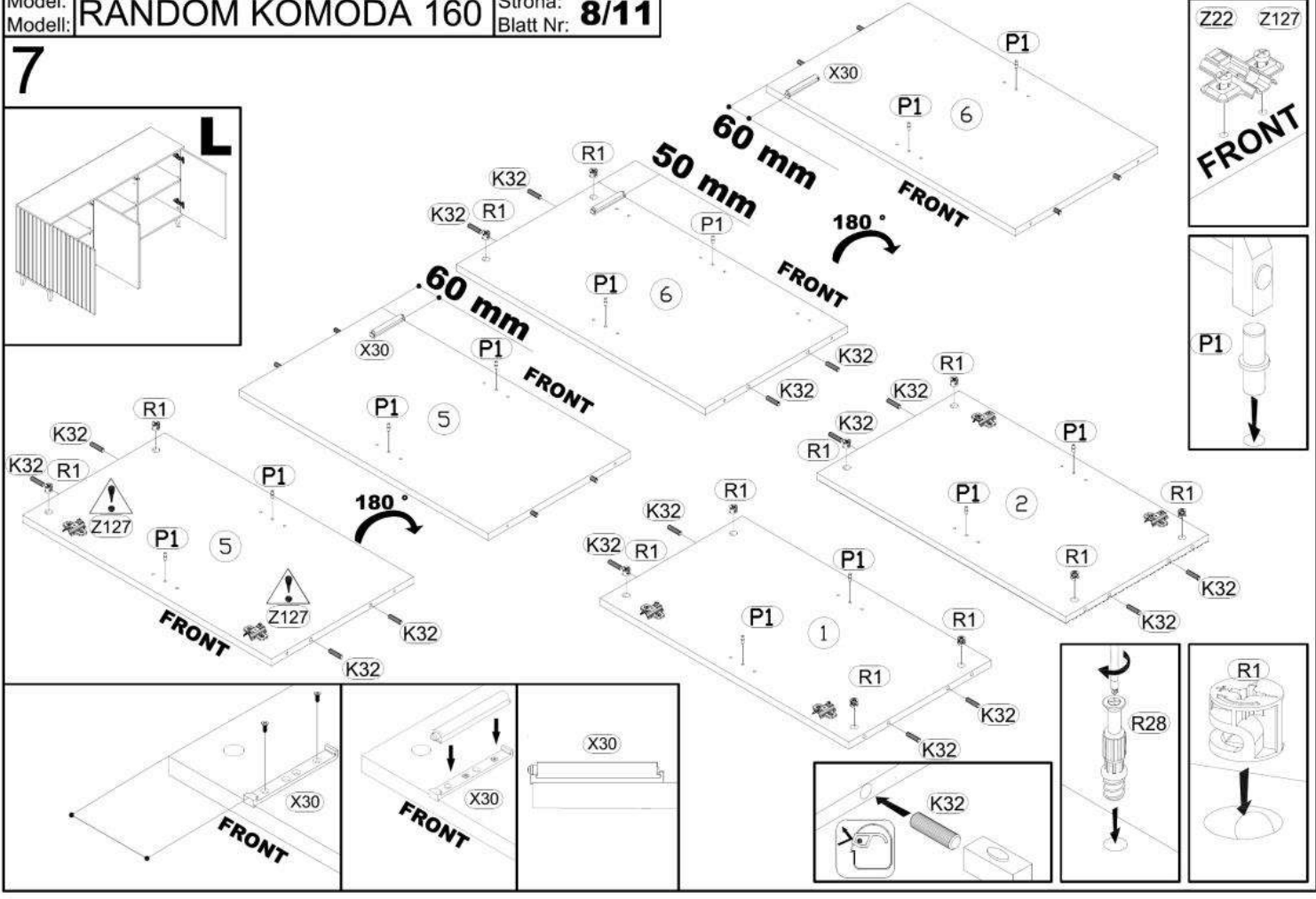
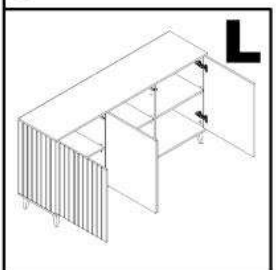
Nowość

6



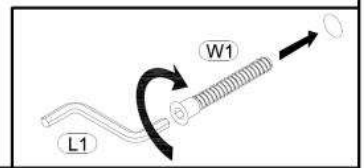
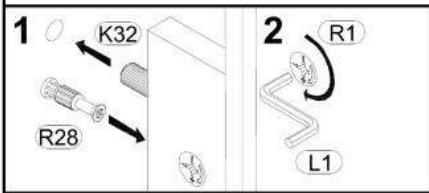
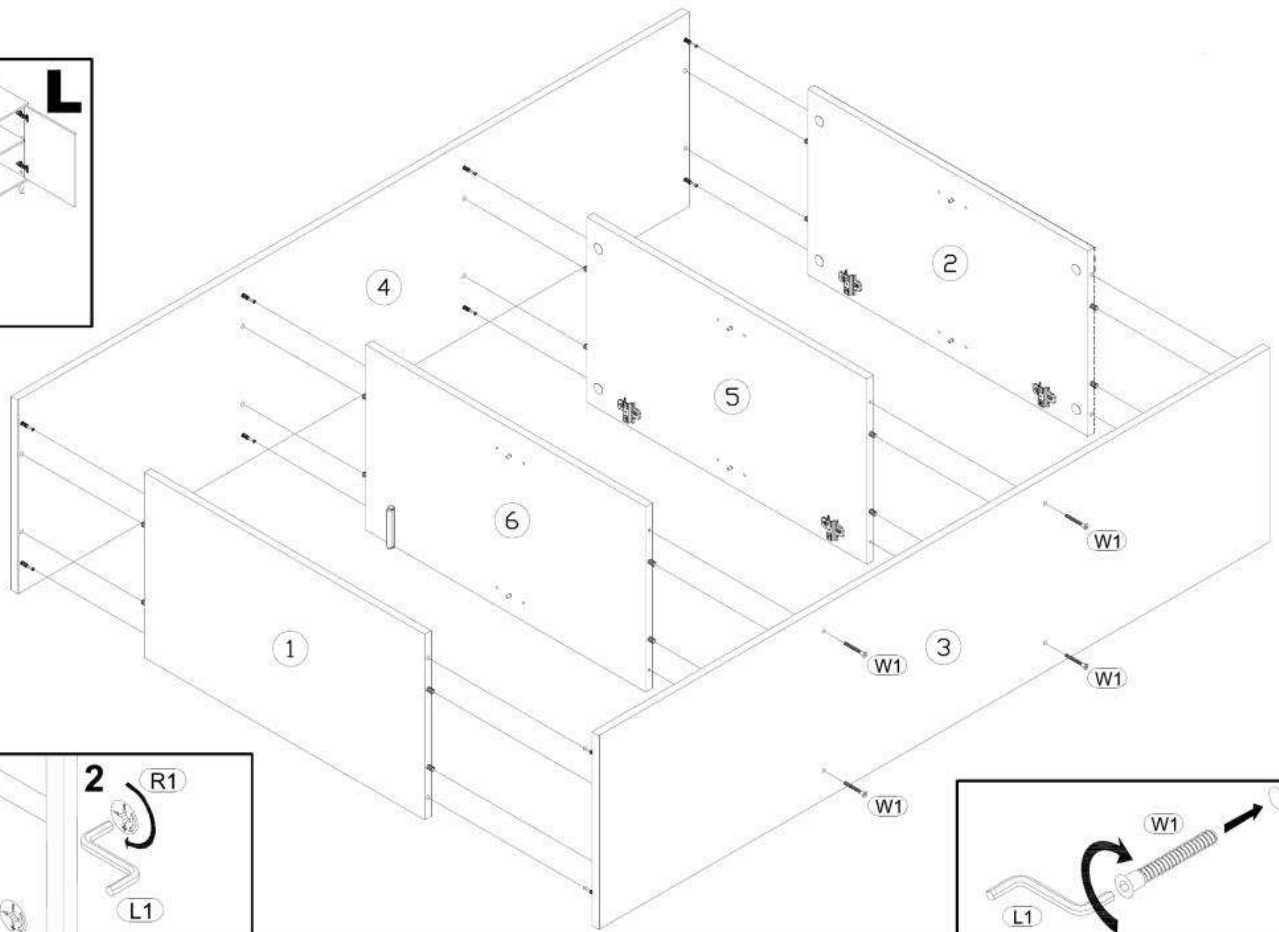
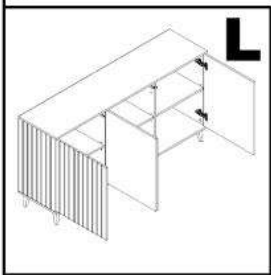
Nowość

7

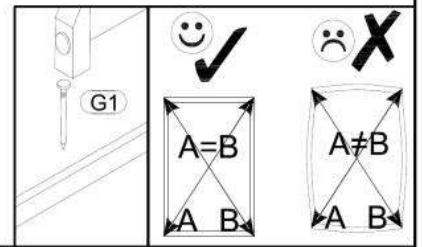
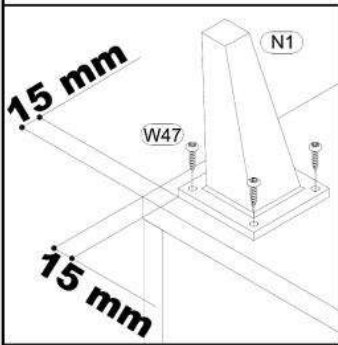
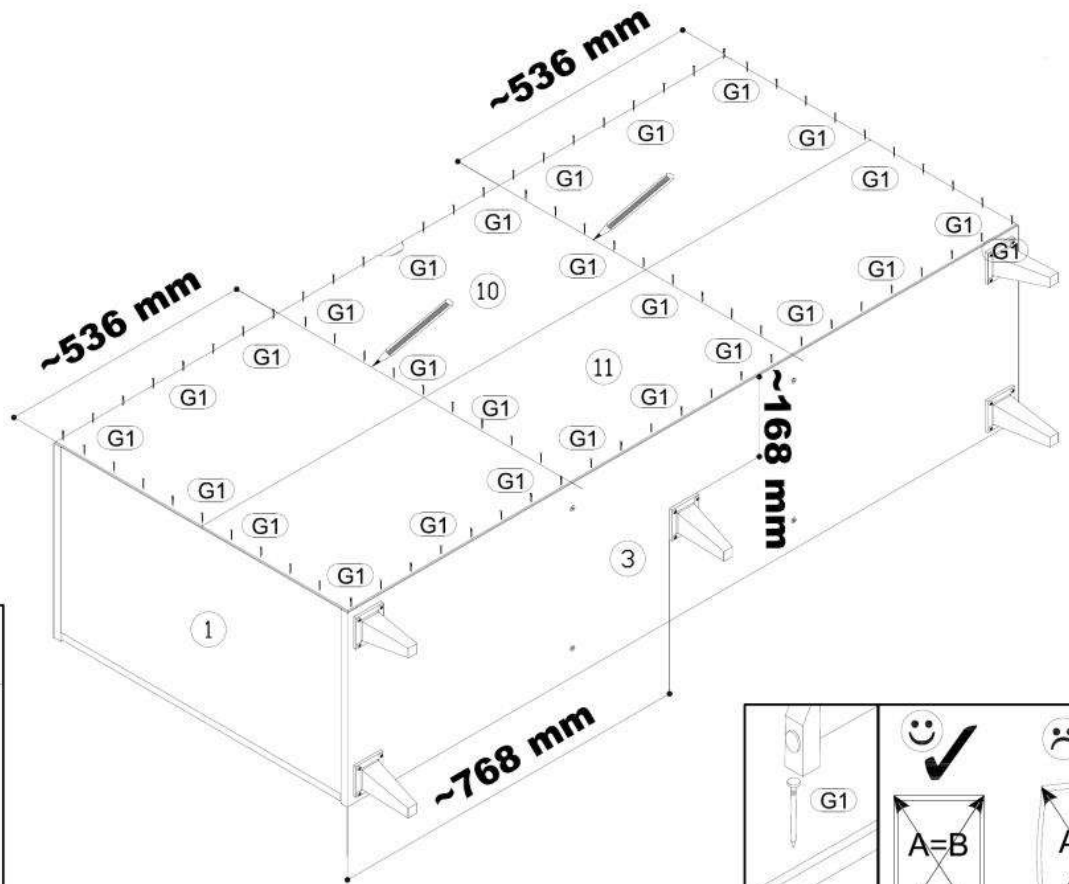
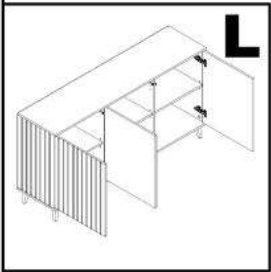


NOWOŚĆ

7

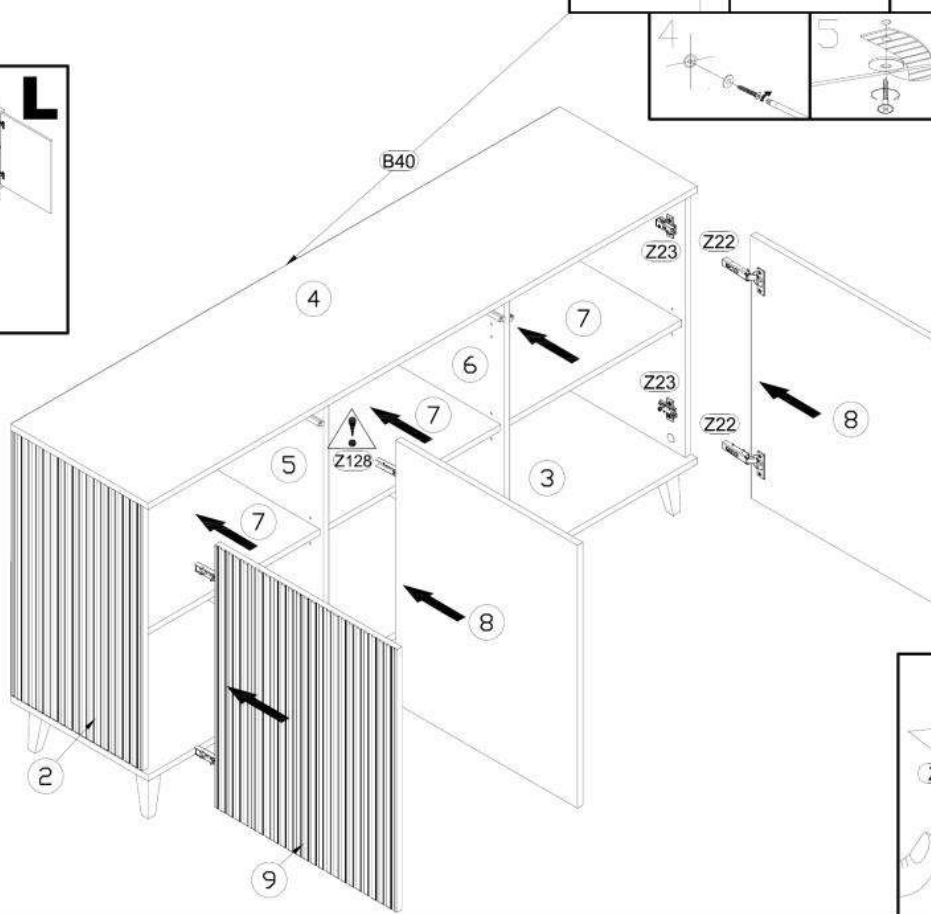
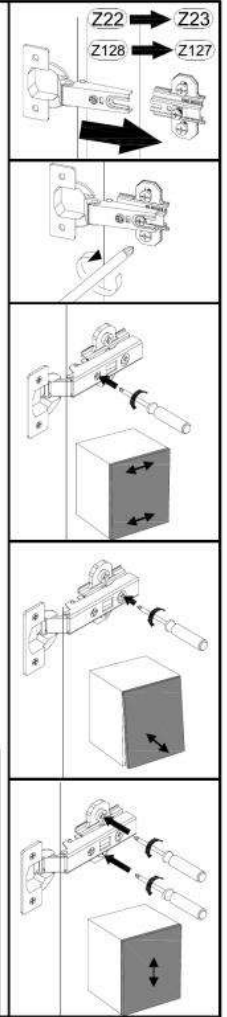
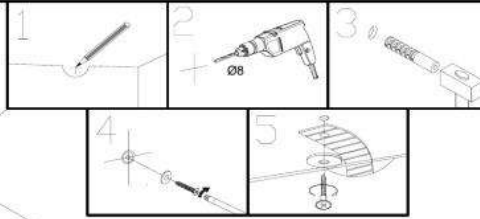
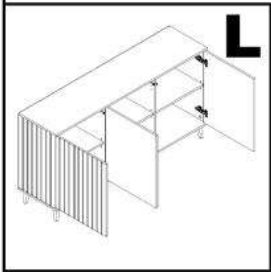


8



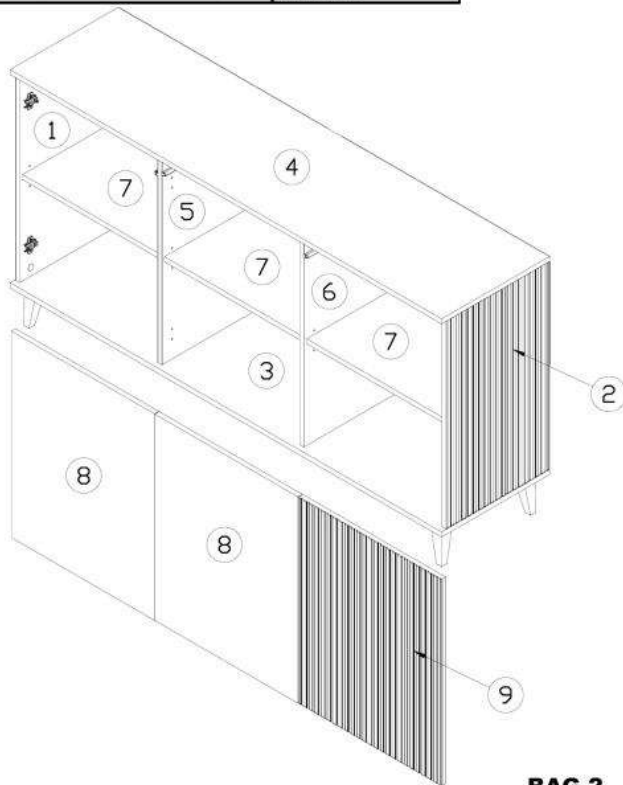
Nowość

9



Model: **RANDOM KOMODA 160** Strona: **1/11**
 Modell: Blatt Nr: **1/11**

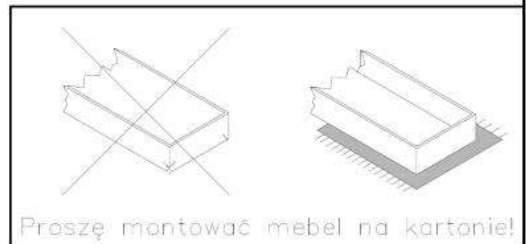
Do montażu potrzebne są:
 Für die Montage dieser Type benötigen Sie:



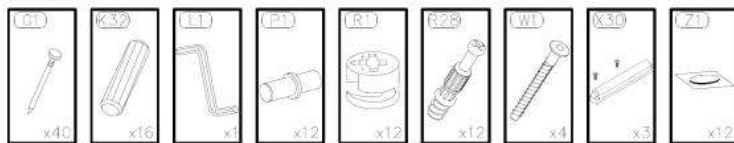
PL INSTRUKCJA MONTAŻOWA
D MONTAGEANLEITUNG
GB ASSEMBLY INSTRUCTIONS

D Sehr geehrter Kunde, sollte ein Teil fehlen oder beschädigt sein, kreuzen Sie bitte dieses deutlich auf der Montageanleitung an und schicken Sie zu uns ab.
GB Dear customer, Should there be any place missing or damaged, kindly mark this place clearly on the attached assembly instructions and return it to us.
PL Szanowny Kliencie, gdyby brakowało jakiejś części lub byłaby uszkodzona proszę to oznaczyć krzyżykiem na instrukcji montażowej i przesłać instrukcję razem z reklamacją.

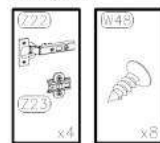
Uwagi pielęgnacyjne!
 Proszę wycierać ściereczką do kurzu lub lekko wilgotną ścierką. Nie stosować ZADNYCH środków rysujących powierzchnie.
Pflegehinweis!
 Bitte nur mit einem Staubluch oder einem fauchtem Lappen reinigen. KEINE scheuernde Putzmittel verwenden!



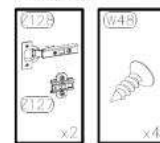
BAG 1



BAG 2



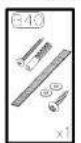
BAG 3



BAG 4



BAG 5



Nowość